

MM710200E

WYNCHAM LED ILLUMINATED MIRROR



MATERIAL

Anodised aluminium frame
Mirrored glass

FINISH / COLOUR

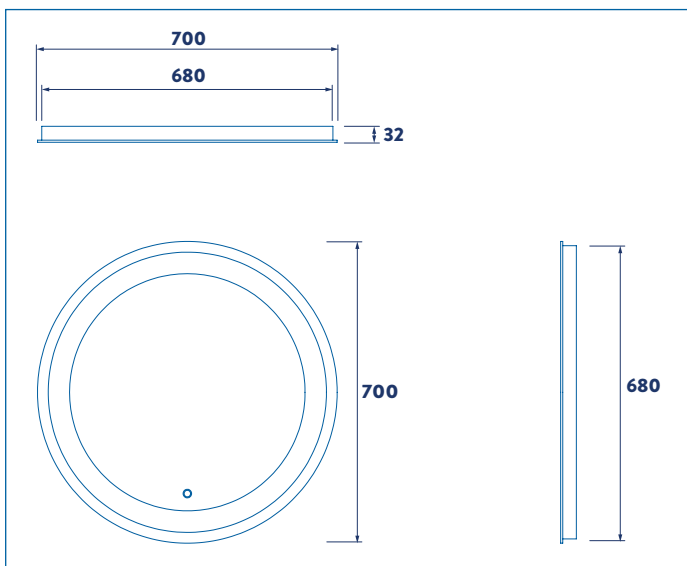
Satin anodised frame

FREQUENTLY USED APPLICATIONS

Commercial washrooms
Hotels
Domestic dwellings
Care homes

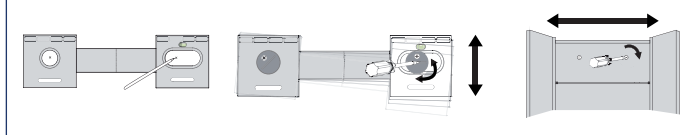
FEATURES

Patented Hang 'N' Lock system for easy installation.
Energy-efficient LED lights.
Heated demister pad prevents fogging and reduces condensation.
Touch-sensitive power switch.
5mm thick rounded pencil edge mirror glass with edge sealing.
IP44 rated, suitable for use in the bathroom outside zone.



HANG 'N' LOCK

Easy Mounting Bracket.
Fully Adjustable For Levelling & Centering.
One Person Mounting.



For dated references, only the edition cited applies. For undated references, the latest edition of the referenced document (including any amendments) applies.

Printed material, designs and packaging are protected by copyright and design right.

MM710200E

WYNCHAM LED ILLUMINATED MIRROR



PERFORMANCE STANDARDS

Input Voltage 220 – 240 Vac 50Hz 26 W.

Demister Pad: 220 – 240 Vac 13.5 W.

LED Lamps: 12 Vdc 12.5 W.

Corrosion Resistance: Minimum Grade 9 when assessed using BS EN ISO 10289 after 48 hours BS EN ISO 9227 Neutral Salt Spray (NSS) test.

Complies with the Low Voltage Directive (LVD) (recast) 2014/35/EU (BS EN 60335-1; BS EN 60335-2-30).

Complies with the Electromagnetic Compatibility (EMC) Directive (recast) 2014/30/EU (BS EN 62471; BS EN 62493; BS EN 55015; BS EN 61547).

Complies with the Restriction of Hazardous Substances (RoHS) Directive (recast) 2011/65/EU.

CARE AND MAINTENANCE

Clean surfaces with a damp cloth and wipe dry using a soft cloth.

Do not use chemical or abrasive cleaners as these may damage the surface finish, particularly along the edge of the mirror glass.

GUARANTEE / WARRANTY

Consumer Statutory Rights Apply

For dated references, only the edition cited applies. For undated references, the latest edition of the referenced document (including any amendments) applies.

Printed material, designs and packaging are protected by copyright and design right.